

Infrared Digital Scouting Camera

Model: BG523
User Manual



Please read this manual carefully
before using this unit and keep it for future reference

English

Table of Content

1. Introduction	02
2. Applications	02
3. Security	02
4. Quick Familiar with Your Digital Camera	03
4.1 Outline Component Description	03
4.2 Shooting Information Display	04
5. Prepare Your Camera for Use	05
5.1 Install Battery	05
5.2 Install SD Memory Card	05
6. Turn on the Camera	05
6.1 Set Test Mode	05
6.2 Automatic Working Mode	09
6.3 Off Mode	09
7. Playback Pictures and Videos	10
8. Important Note	10
8.1 Install SD Memory Card	10
8.2 Battery	10
8.3 Mounting and Fixing Camera	10
9. Appendix A: Technical Specifications	11
10. Appendix B: Parts List	12

1 Introduction

Thank you for purchasing this hunting camera. The digital camera unit will be triggered at once (normally within 0.5 second) and then automatically take photos or videos according to previously programmed settings.

The camera consumes very little power (less than 180 μ A) in a stand-by (surveillance) state. This means it can last up to 12 month stand-by operation time when the device is powered by utilizing lithium 8 AA batteries. The camera is equipped with built-in infrared LEDS, so that it delivers clear photos or videos (in black & white) even in the dark, and it can take color photos or videos under sufficient daylight. The camera is designed for outdoor use and it is waterproof.

2 Applications

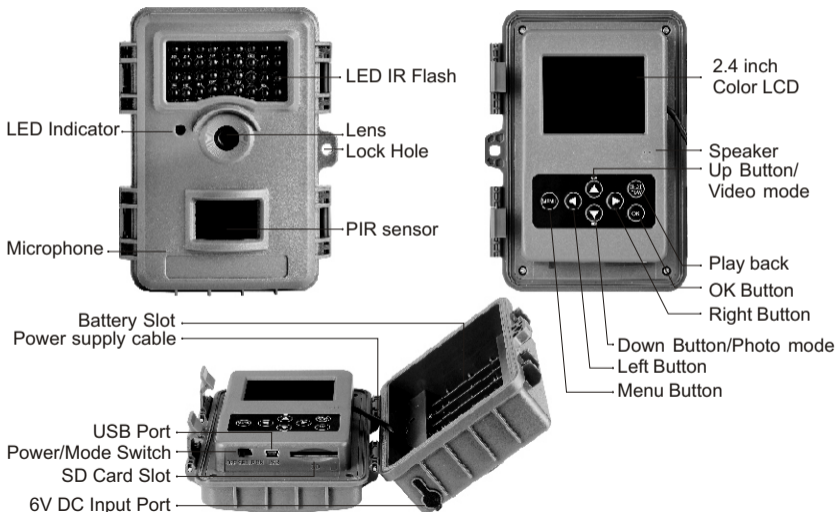
This camera can be used as an automatic monitoring device for security protection and recording unexpected House Shop School Warehouse Office Taxi Construction site Intrusion, etc. Can also be used as a hunting surveillance camera to track the trail of wild animals. It can be left alone for weeks and months. At the same time it will automatically save the event as a digital format (stored in a digital format in the memory card).

3 Security

Please read and understand the following safety measures before using this product.
Do not attempt to open the product shell, only authorized personnel can be repaired.
Please use the accessories provided by the manufacturer.

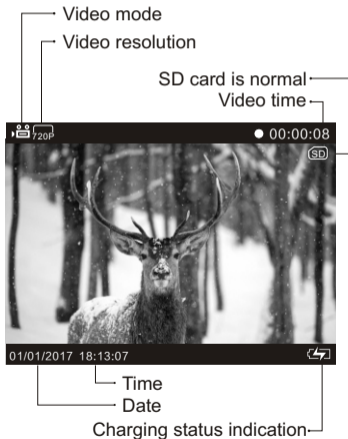
4 Quick Familiar with Your Digital Camera

4.1 Outline Component Description



4.2 Shooting Information Display

There is a 2.4"LCD display screen with seven keys to setup the camera. When the camera is turned on, current setting will be displayed on the screen.



5 Prepare Your Camera for Use

5.1 Install Battery

This camera uses two power supply mode: DC_6V DC input and 2 sets of 4 section AA(1.5V) battery DC power supply, supply voltage 6V. Be sure to align the positive and negative poles of the machine (at least 1 set), or insert the DC power supply correctly.

5.2 Install SD Memory Card

This camera uses SD memory card as data storage, please insert the SD memory card correctly before you start.

6 Turn on the Camera

6.1 Set Test Mode

1. Slide the switch to the **SETUP** position, then the machine starts, display logo, enter Setup Test mode, press **MENU** to enter parameter settings (If the machine does not operate within 120 seconds, the machine will automatically shut down, at this time, please slide the switch back to the **OFF** position and then dial to the **SETUP** position to restart.) .
2. Press **Menu** key to enter into menu or exit. The **OK** button is used to confirm the setting, **UP**, **Down**, **Left** and **Right** key can be used to choose function mode and setup camera. **Shot/Play** key is used to take photos or videos manually, and also playback photos or videos on LCD.

The main purpose of the **SETUP** mode is to allow you to change the settings of the camera's Parameters, so your camera operates exactly the way you want it to. You will do this by entering the **SETUP, MENU** and pressing the keys below the LCD display which will show you each parameter and its setting.

Main Menu	Set Parameters	Description
Mode	Photo/video Photo & video	There are three camera modes: Photo, Video and Pic+Video
Photo resolution	3MP/5MP/8MP	Choose the image size: 3MP, 5MP or 8MP
Photo Series	1Photo/2Photos in series /3Photos in series	Choose the continuous shooting numbers after each triggering
Video resolution	1920X1080P/ 1280X720P/640X480P	Choose the video resolution: 1920X1080, 1280X720 or 640X480
Video length	10S/20S/30S/60S	Choose duration of recording video. It has four values: 10S, 20S, 30S and 60S.
Audio recording	ON/OFF	If choose ON , camera will record sound in video mode, otherwise it won't record sound.

Main Menu	Set Parameters	Description
Delay	5S-60minutes	Selects the length of time that the camera will “wait” until it responds to any additional triggers from the PIR after an animal is first detected and remains within the sensor’s range. During this user set “ignores triggers” interval, the camera will not capture photos/videos. This prevents the card from filling up with too many redundant images. Settings begin with 5s default when parameter is first selected.
Sensitivity motion sensors (PIR Trigger Sensitivity)	High Middle Low	Choose sensitivity of PIR. The higher, the easier motion sensor would be triggered. It is recommended to use Middle mode. The sensitivity of PIR is strongly related to the temperature. Higher temperature Leads to Lower sensitivity.
Target recording time	ON/OFF	Decide what time the camera will start to work and what time the camera will stopped.
Time lapse	ON/OFF	If set on, camera will automatically take photos or videos at the set interval (Note: in this mode, the PIR

Main Menu	Set Parameters	Description
Time lapse	ON/OFF	sensor is disabled). This is helpful when observing cold-blooded animals like snake or the process of flower. This function can work together with timer.
Language	Deutsch/English/ Français/Slovenscina/ Norsk/Dansk/ Svenska/Русский/ Español/Italiano	Choose language you need. It supports several languages: Deutsch, English, Francais, Slovenscina, Norsk, Dansk, Svenska, Русский, Español, Italiano.
Time&data	Set time & date Time format Date format	Enter into Date/Time setting Menu, you can select 24 hours or 12 hours format and press OK to confirm the setting.
Photo stamp	Time & date Date OFF	Select on if you want date, time and moon phase printed on every photo taken by camera, and select off for no imprint.
Temp Unit	Celsius/Fahrenheit	
Password protection	ON/OFF	Setup a password to protect your camera.
Beep sound	ON/OFF	Select on if you want voice when setting up camera.

Main Menu	Set Parameters	Description
Serial No	ON/OFF	If setting serial number, all photos taken by camera will show sequential number.
Format memory card	YES/NO	Erase all files or data on SD Card or save all data on SD Card.
Reset settings	YES/NO	All parameters will be set the same as factory Default setting.
Version		Check Version Number will be good for repair or upgrade.

3. Take a picture: press **Down** key first, then press **OK** key.
4. Record the video: press **Up** key first, and then press the **OK** key.

6.2 Automatic Working Mode

After set and save the parameters, slide the switch to the **ON** position (LCD display 5-1 countdown to shutdown), the machine enters the automatic sensing mode.

6.3 Off Mode

After shooting, please slide the switch to the **OFF** position, the machine enters shutdown mode (Please remove the battery from the machine when the machine is not used for a long time).

7 Playback Pictures and Videos

1.Playback file on the camera: camera is on test mode, press **SHOT/PLAY** key to enter playback mode, photos can be selected through the **UP** or **Down** keys to view, video files must be selected and press **OK** key to play.

2.View file on PC: camera is on shutdown mode, connect the machine to the computer with the adapting USB cable of this machine, and then you can view the file directly on the PC side.

8 Important Note

8.1 Install SD Memory Card

The SD card is the only data storage device in the camera, be sure to choose a regular SD card.

8.2 Battery

Alkaline LR6 batteries are recommended. We recommend using 4AA or 8AA batteries in (1.5V for each), camera voltage is 6V.

8.3 Mounting and Fixing Camera

When installing camera, 85ft ahead the camera can not be blocked.

9 Appendix A: Technical Specifications

Image Sensor	3MP CMOS sensor 5MP, 8MP Interpolation
Lens	F=2.0 FOV=70° Auto IR-CutRemove (at night)
Display Screen of Remote Control	2.4"LCD
PIR detection range	82ft
PIR Sensitivity	Adjustable(High/Middle/Low)
Memory Card	Up to 32GB
Image Resolution	8MP=3264x2448, 5MP=2592x1944, 3MP=2048X1536.
Video Resolution	1920x1080p(24fps), 1280x720p(30fps), 640x480p(30fps)
Operation	Day/Night
Trigger Time	<0.5S
Power Supply	4AA or 8×AA recommended
Sound Recording	Available
Mounting	Rope(<Ø10mm)/Belt/Python Lock

Operation/Storage Tem	-20~+60°C/-30~+70°C
Operation Humidity	5%~90%
Dimensions	140x108x76mm
Weight	305g (Without battery)
Security Authentication	FCC, CE, ROHS
Waterproof Grade	IP66

10 Appendix B: Parts List

Part Name	Quantity
Camera	One
User Manual	One
USB Cable	One
Belt	One

Version: 1.0

